

RACE SCREEN PRINTS AND COMMENTS

SATORI SYC

FOR THE

PIC COASTAL CLASSIC 2020 (115 nm)

STARTING AT 2100 UTC OCTOBER 22, 2020

FINISHING AT 20:33:54 UTC OCTOBER 23, 2020

SKIPPER - JOHN GAMBLES RCYC and SYC

(Satori finished 10th of 116 boats racing of the 145 boats registered)

(Satori is ranked 36th of 252 in SYC World Rankings after 10 races)

PIC COASTAL CLASSIC

Chart and Info: PIC Coastal Classic Yacht Race 2020 (115nm)

Start time: Oct 22 2020 21:00:00 UTC

Start by Devonport Wharf at position: 36S50.1915 174E47.6608

Marks:

BRG is the bearing from ship to mark at scoring position.

1: North Head	- Leave 36S49.7400 174E48.7800 to Port - BRG 304
2: Takatu Peninsula	- Leave 36S22.0800 174E51.9600 to Port - BRG 262
3: Cape Brett Light	- Leave 35S10.7100 174E19.9020 to Port - BRG 204
4: Tapeka Point	- Leave 35S14.7000 174E07.1580 to Port - BRG 145

Finish line:

Line by Russell between marks A and B at positions:

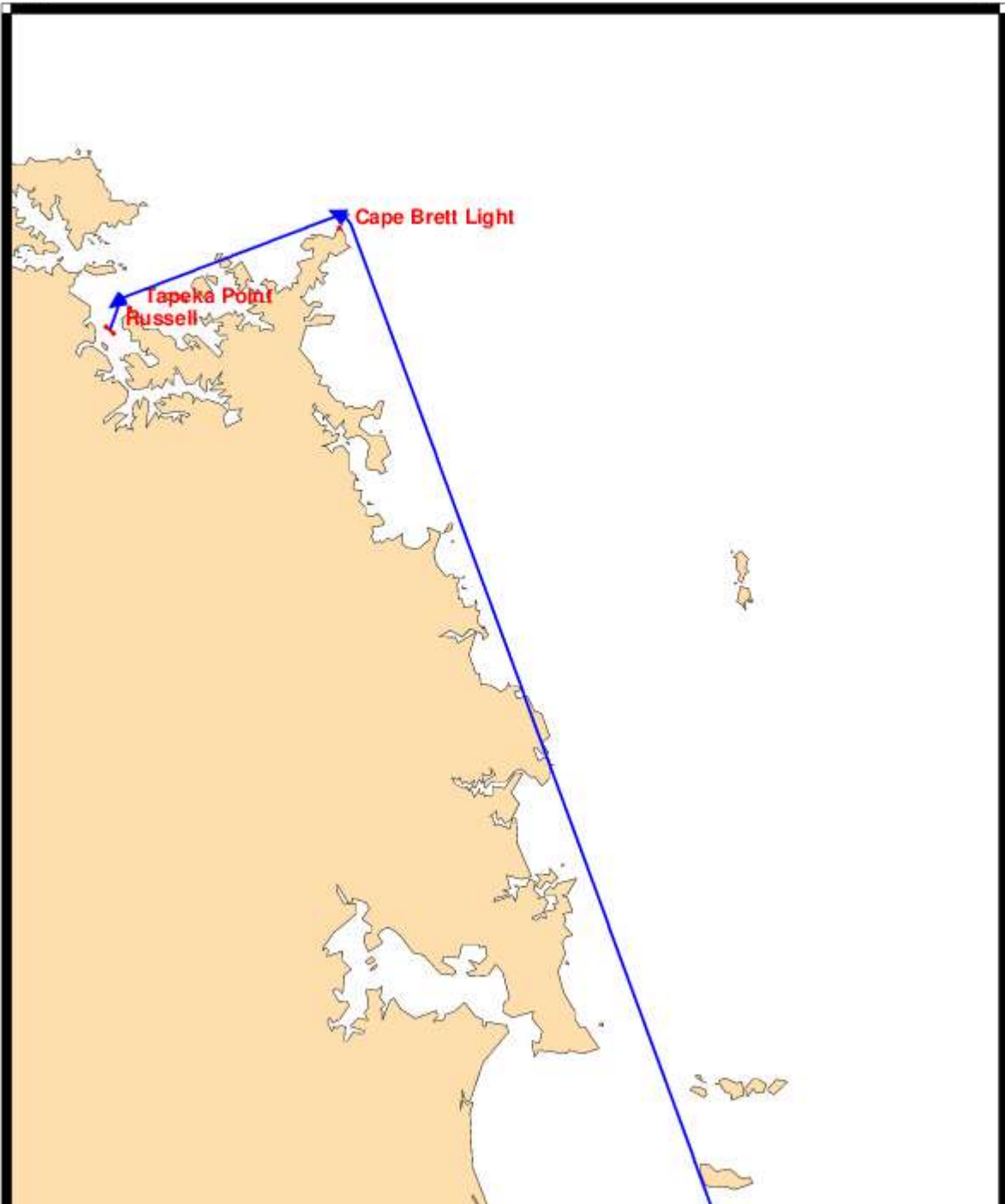
A:	35S15.9812 174E06.1874
B:	35S15.6508 174E05.7286

PIC COASTAL CLASSIC

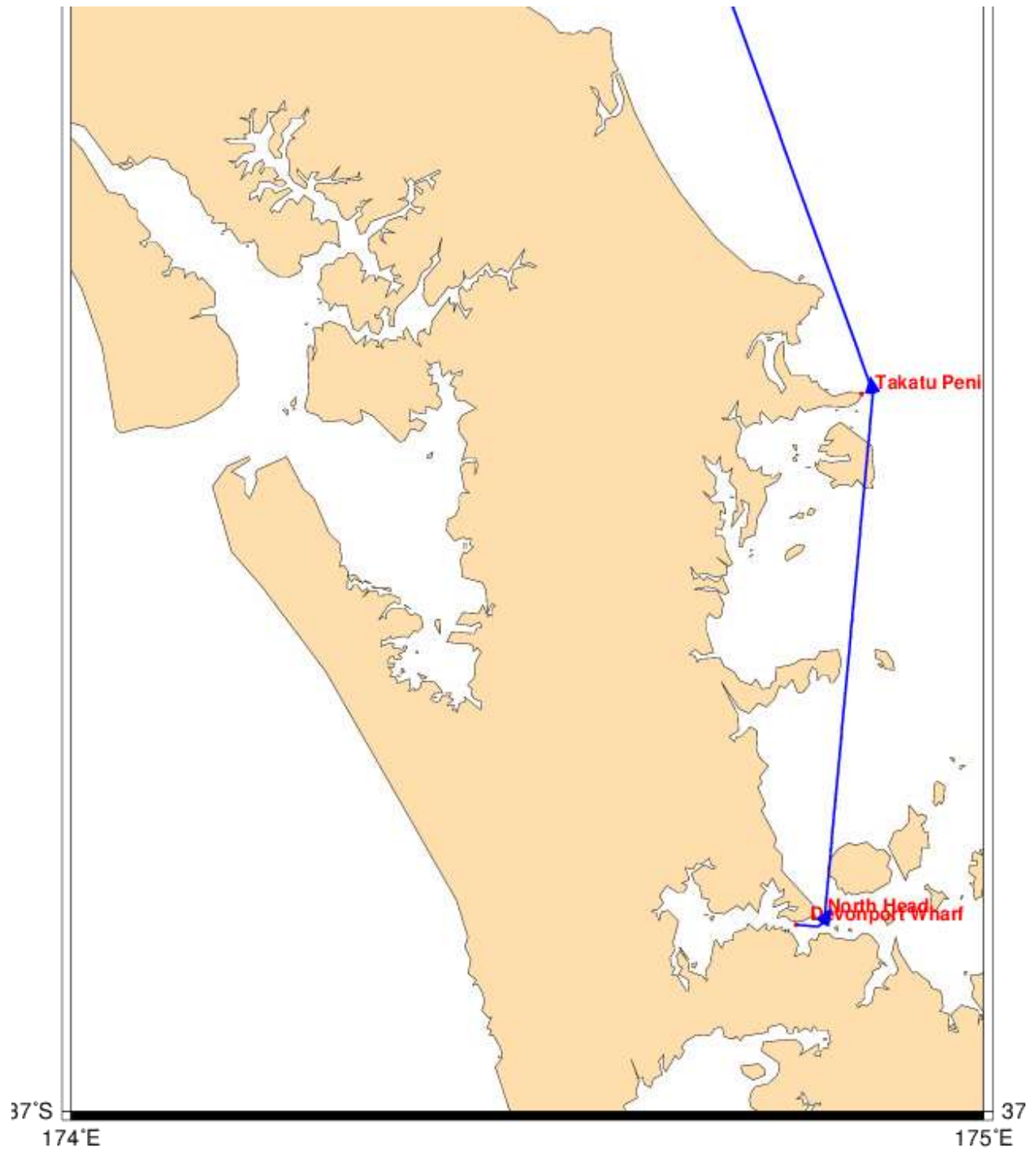
174°E

175°

3



PIC COASTAL CLASSIC



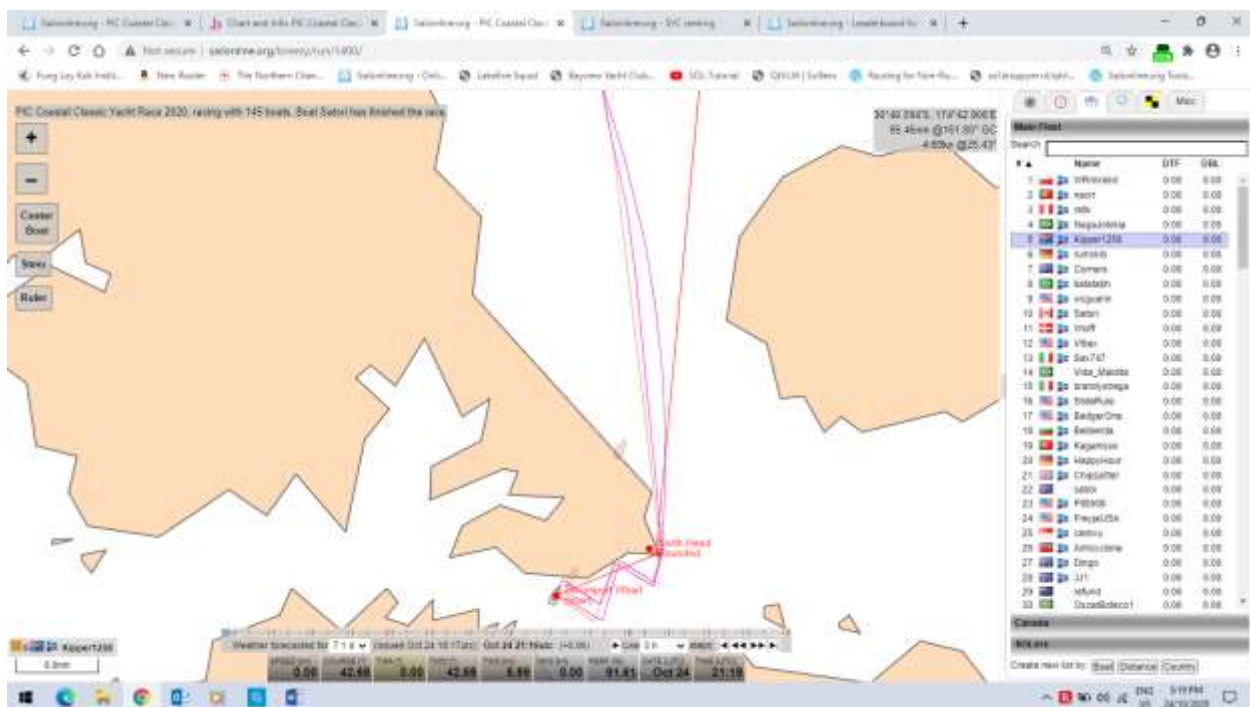
PIC COASTAL CLASSIC

I was contemplating not writing a Report since I was so busy wrestling with my lost connections between SOL and QtVLM (Qt), which I will talk about later, but the Race turned out to be so interesting and challenging on a number of fronts that I could not resist. Please let me know if my Reports are of value to you SOLers, especially you who are beginners like me. I hope that the fact that I can finish in the Top Ten and move up the Rankings is an inspiration to those of you who might be feeling discouraged at this moment after a Race as challenging as this one.

I particularly wanted to do this Race because I love New Zealand and Russell is one of the places for sailors to visit because of its beautiful location in the Bay of Islands and its colourful history. Russell, known as Kororareka in the early 19th century, was the first permanent European settlement and seaport in New Zealand. It was infamous back then as sign says as you get off the Paihai Ferry “The Hell Hole of the Pacific – Missionaries, Madams, Madmen All Welcome”. The unlawfulness of the sailors, whalers and pirates influenced the Maori to sign the 1840 Convention of Kanagawa with the British which resulted in a British Colony and British policing. I knew that all of us SOLers would be welcome since the historic waterfront Duke of Marlborough Hotel still has the banner “Refreshing Rascals and Reprobates Since 1827”! I recommend staying in Devonport and taking the regular ferry to Auckland.

Don't we all wish we were living in New Zealand during this Covid-19 crisis?

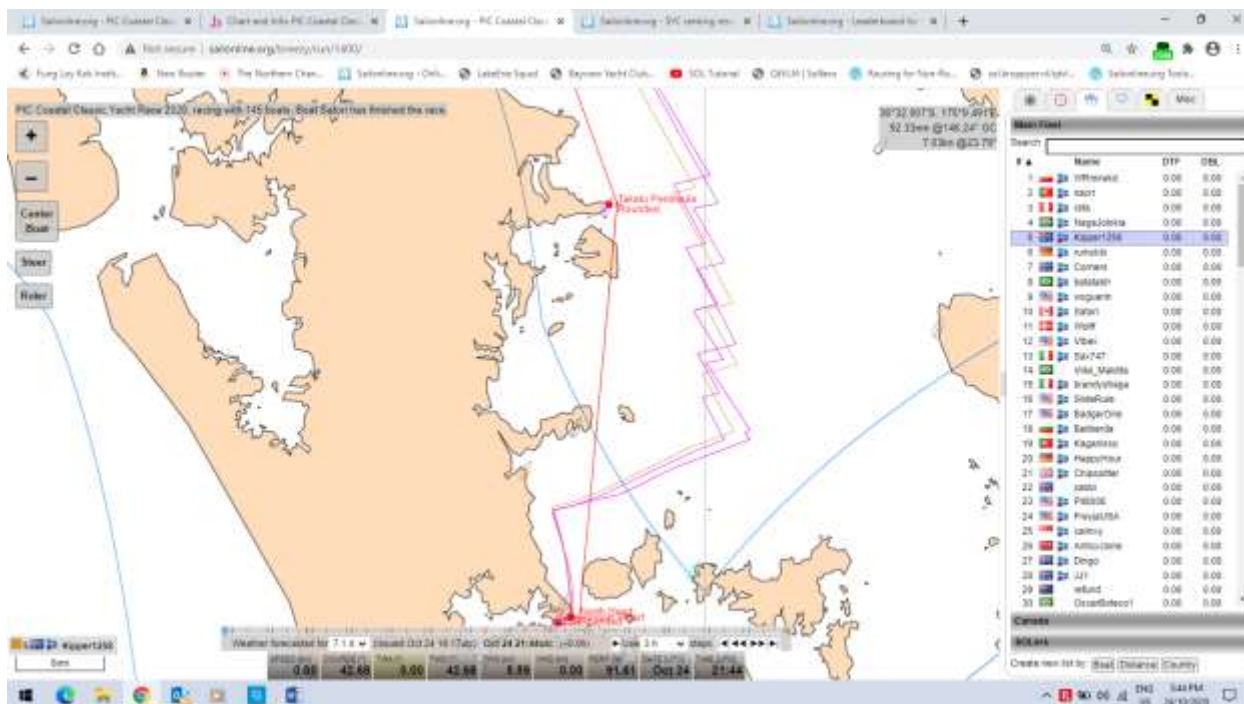
The Race



Here is a comparison of the courses - **WRMirekd** in purple who won the Race by 29 seconds over **nacrr** and by 2 minutes and 28 seconds over **rafa**, who finished third. As you know the footprints of all three of these SOLers are almost imbedded in the Podium. The other course in light brown is Kipper1258, Number 1 in the SYC World Rankings, who finished 5th. Since my connection between SOL and Qt was down I decided that I was going to be watching Kipper1258. **Satori's** course is the magenta line. The courses from the Start are similar but **WRMirekd** went to port first and as I remember the winds were

PIC COASTAL CLASSIC

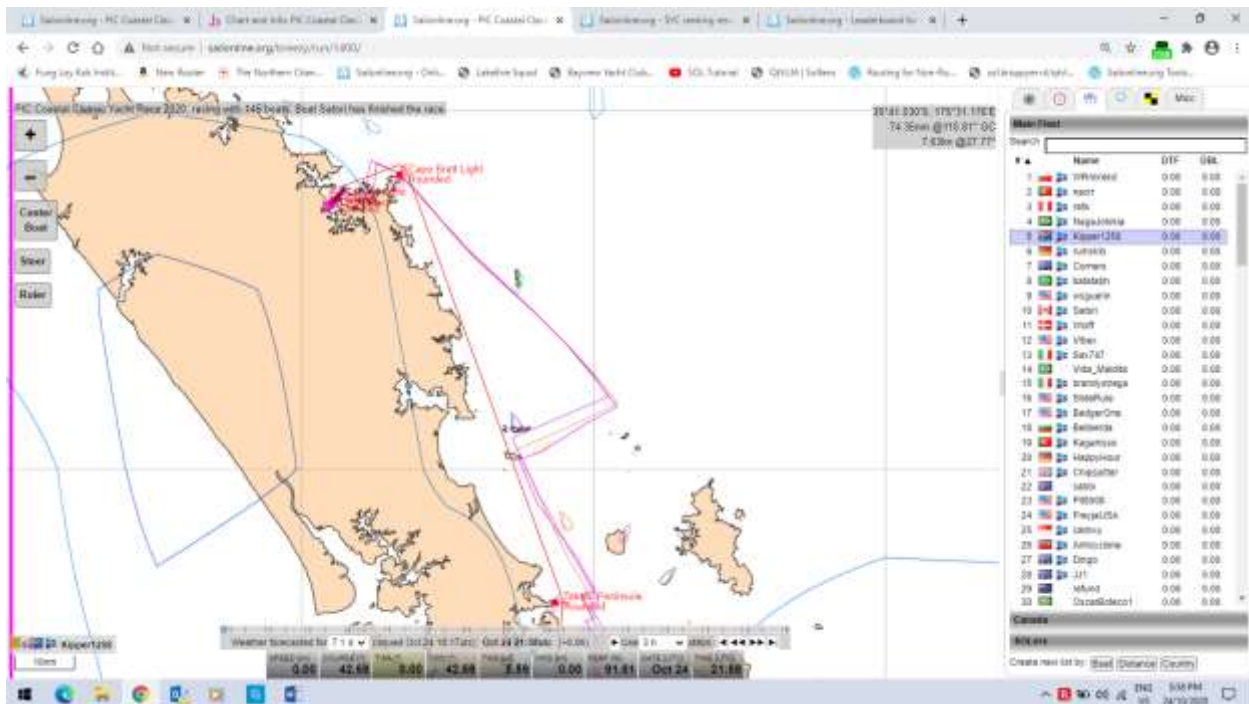
slightly higher there. I wish I had made a note of who rounded North Head first. I did get Qt running just after the start and then it went down again before I rounded North Head. Fortunately, I had two Routes in Qt from the day before that I could toggle to and guess where **Satori** should be while keeping an eagle eye on the competition!



Above are the courses for **WRmirekd** and **Kipper1258** compared to **Satori** from North Head up to Takatu Peninsula. While **Satori** was on the first leg of this run I got Qt back in play and it produced the DC's for a course to the Cape Brett Light Mark. Similar courses but major differences in the use of the wind strengths. I did not follow Qt blindly. I was not going to let the competition out of my sight. I do not think that I am being delusional but I am pretty sure that **Satori** was ahead of **Kipper1258** during parts of this run, which was encouraging at the time and suggests that I could have done better!

PIC COASTAL CLASSIC

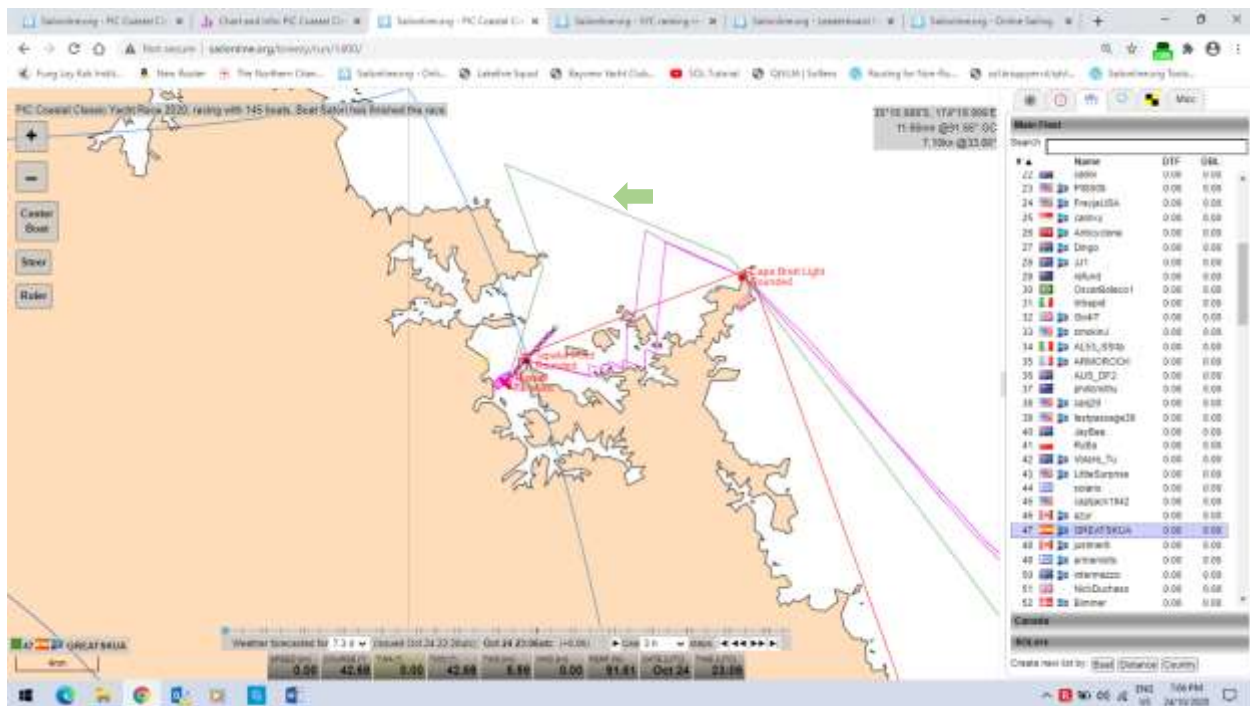
Below are the courses for **WRmirekd** and **Kipper1258** compared to **Satori** from Takatu Peninsula to the Mark at the Cape Brett Light. Now when you look at these similar looking courses you know the differences are not minor. Presumably we were all using routing software and I assuming that to be Qt, although **WRmirekd** in the Carib Rum Run alluded to having two routing systems to choose from. Updating the Route from the boat can and will produce differences due to the different positions of the boats at the updating. Otherwise these differences must come from the use of different Settings in Qt. While we all have an individual responsibility to learn how to use these Settings to individual advantage, our tactical secrets, we all should have a common understanding of their purpose and what they are capable of doing. I am hoping that we can generate discussion on this for those new to SOL and Qt. It is disappointing that Qt's Manual does not go further on this. I have posted a comment on the Forum in an attempt to generate such a discussion. <http://www.sailonline.org/board/thread/14339/qtlm-thread/?page=31>. There are some very helpful responses that **Vibex** and **Zorba777** have kindly added to start the discussion or point us beginners to where the answers are in the Forum or Links on the Home Page. Hopefully, more comments will follow. I recognize that if you have been around for a while this may simply be a restart of an old discussion that you take for granted!



PIC COASTAL CLASSIC

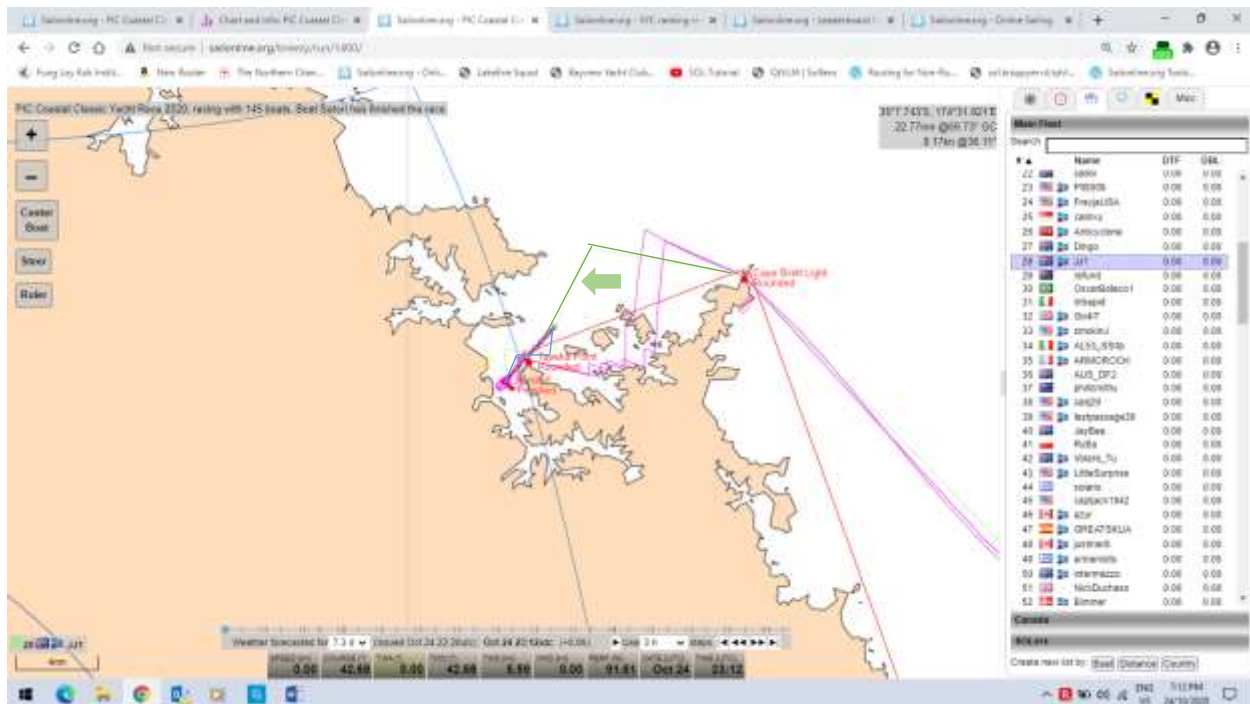
Now, as you know, Cape Brett Light to the Finish Line is where the Race got interesting and very, very challenging. Should you stay in open water or boldly thread the islands. This is where I had to forget about what my Router was telling me and get on the helm, since my route creation was not very sophisticated. Now, I am going to show screen prints of some of the Routes that were being produced. Of course the Route would depend on when the boat passed the Cape Brett Light. I have meaningfully not named the boats since it should not be a criticism of them it is just to show the differences that can come out of the routing software. Qt's correct intension is to get to the destination as fast as possible without knowing that you just want to get there ahead of the competition! With this maze of islands how sophisticated would your Qt Barrier set-ups have to be to create the routes the winners used? Because there were high-ranking boats ahead of **Satori** as we rounded Cape Brett Light I was looking at the Qt Route and instinctively did not like what I was looking at in a racing environment. I decided not to upload it to SOL until I saw what the boats ahead of **Satori** where doing. One of the advantages of not being in the lead! I had this strong feeling that this was going to be a SOMP's Leg to the Finish Line!

Here is one routing to the Finish Line (the green line). My Qt course was not quite this extreme but similar. Again, keep in mind it would depend on where the boat was and the time that the route was created.

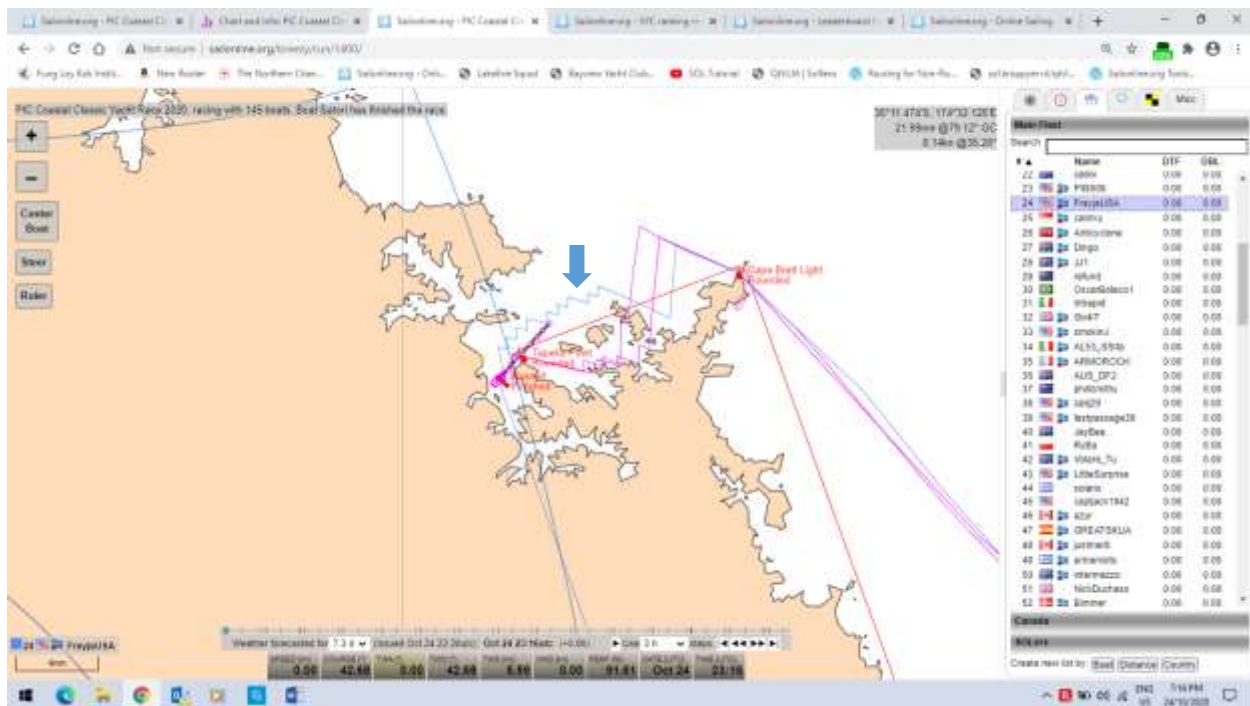


PIC COASTAL CLASSIC

Here is another (the faint green line) that is not as extreme as the course from my Qt.

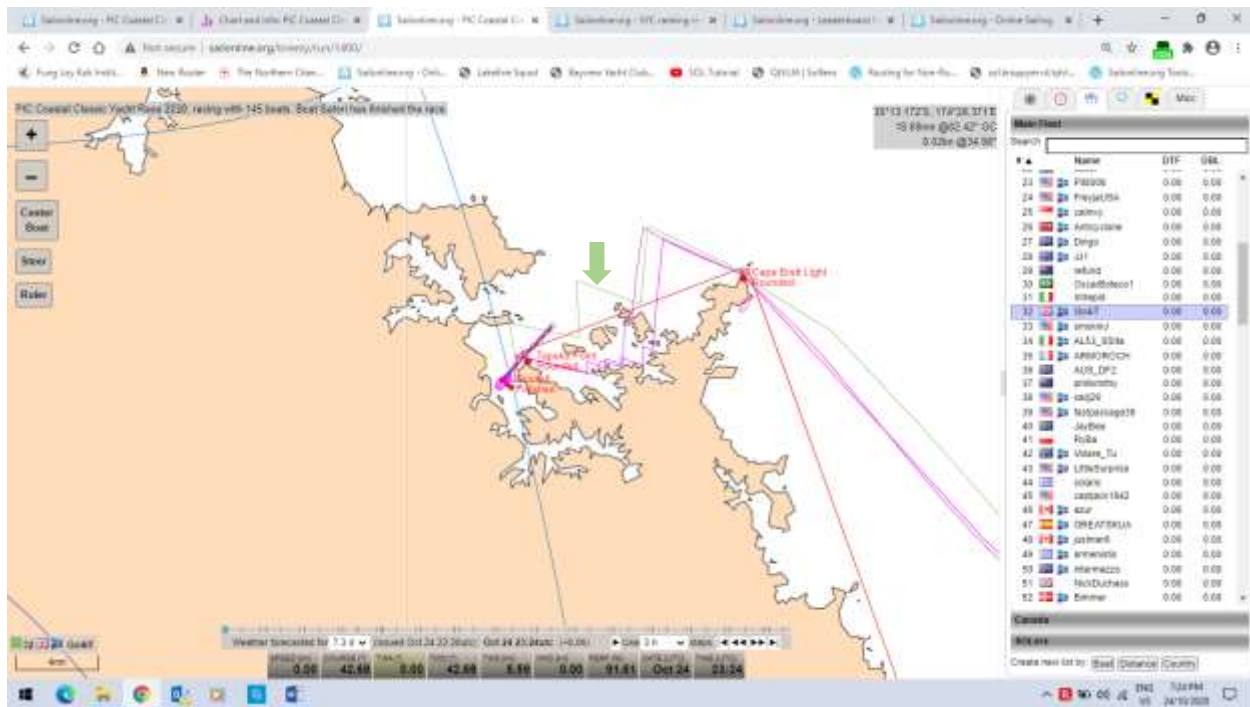


Here is another, obviously unaltered Route in light blue. This reminds me that it is essential that I go to the Routes Comparator in Qt and look at the number of Tacks and Gybes and then go to the Route Log and scan the complete log looking at the tacks and gybes. I have to edit the Log or change the crank time in order to reduce the number or, as I do, get on the helm. There would have been Perf Loss!

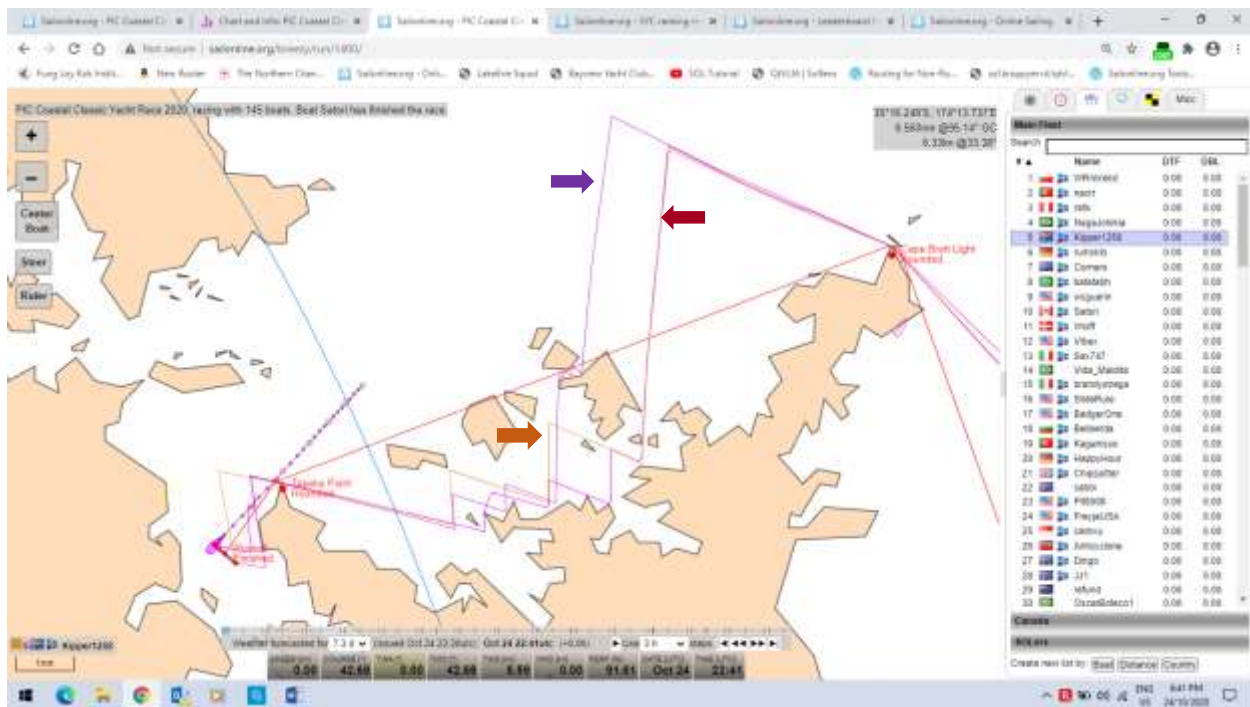


PIC COASTAL CLASSIC

Here is another Route in light green with only 7 tacks and long legs.

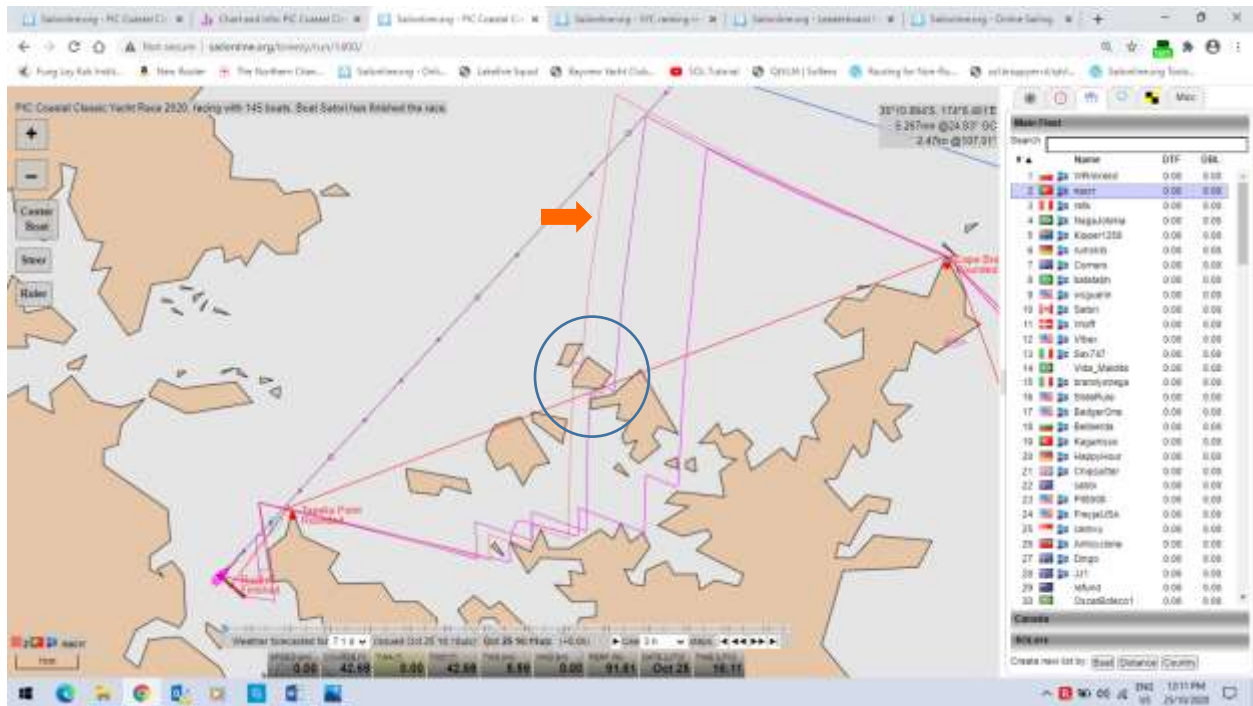


Here are the finishing courses of the winner **WRmirekd** → **Kipper1258** → and **Satori** ← threading the islands.

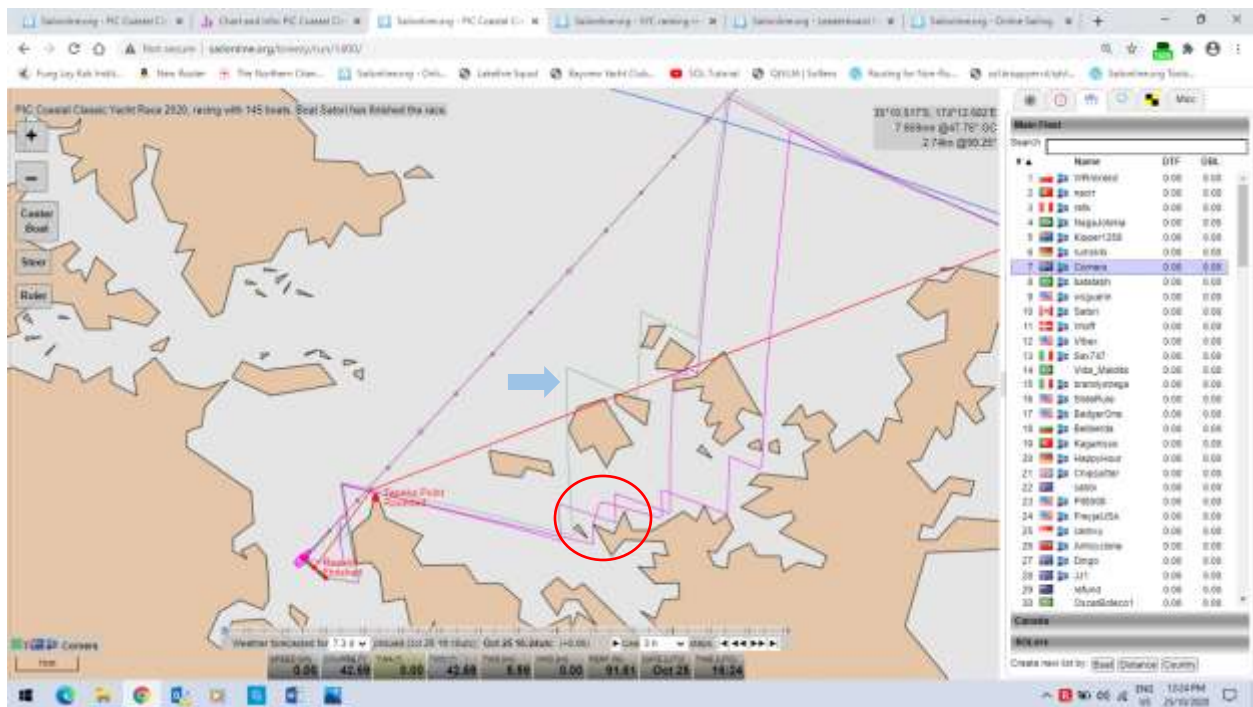


PIC COASTAL CLASSIC

Here is the route of the No. 2 boat **nacrr** on a slightly different route through the islands. You can see that some short tacks were required between these islands by both **nacrr** and **WRmirekd**.



Here is the course of **Corners** the 7th placed boat.



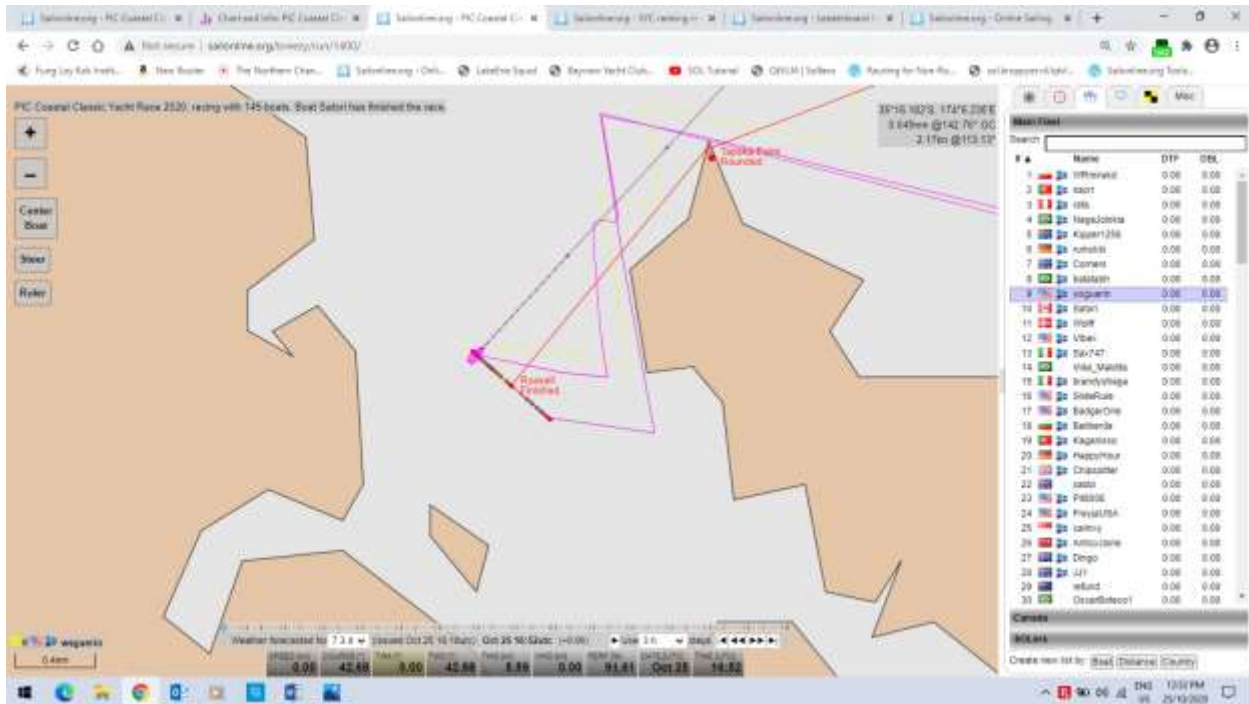
You can see this sloppy tack **Satori** made that certainly cost the 29 seconds between 9th and 10th place. I intended to make two tacking moves to lessen performance loss but moved too early and just left it!

PIC COASTAL CLASSIC

All of the Top Ten boats threaded the islands. Why? You may remember that the winds were higher below the islands and a good TWA could be sailed on a shorter course.

Here are is the finishing Leg around Tapeka Point to the Finish Line. The winning course of **WRmirekd** and **Satori**. You may rightly ask what was **Satori** doing. What you probably cannot see is the faint yellow line of the course of my friend **wsguerir**. Since he was almost invisible on the screen he appeared out of nowhere just as **Satori** was rounding Tapeka Point and was challenging **Satori** for 9th place. I would not have known that he was there at all except for clicking on the Ranking List. I was doing my best to cover him, thus the tacks you see. However because I could not see him except by clicking on the Ranking List I was always one or two cranks late. In the end 29 seconds late!

I should have been sailing my Carib Rum Run pirate boat **Shadow Hunter**!



I certainly had a number lessons reinforced in this Race. There is no question that being at the helm is a distinct advantage even when you are using routing software. Because I kept losing my connection between Qt and SOL I was forced to be at the helm for all but 3 hours! Just like IRL I was watching and covering the competition closely, especially the high-ranking SOLers. It can be an advantage not to be first! When I had a Qt route I was not following it blindly unless I could actually understand the advantage it was trying to give me over the competition. That meant that I was constantly looking ahead at the weather for wind speed, knocks and lifts. Switching from COG to TWA when there was an advantage. Keeping the weather up-to-date. My alarm is set for 6 hours! When I want to abandon the DC's from Qt I empty the BrainAid DC Editor box and apply an empty box to quickly remove all of the uploaded DC's. I particularly watch the boats close to me who are challenging my placement. If they are close I get on their bow and stay there just like IRL. For a stretch **Vibex** was climbing my transom and keeping me busy! When a 90° tack or gybe DC is coming up I have been slowing the boat down briefly with a temporary tack or gybe in the minute or so before the DC executes. I am not always as sloppy as I was in this race after threading the islands as pointed out in one of the previous screens!

Using QtVLM

The day before the Race I was on Qt creating exploratory routes using the Race Start Time. I had offshore Marks set up off North Head and Cape Brett Light for creating these courses and using Route Comparison. I intended to carry on with this research on the morning of the Race. I awoke early to find that I no longer had a connection between Qt and SOL, no boat or NMEA on Qt! I spent a good 8 hours and my \$\$Technician was engaged for an hour with no solution found. I was using Google Chrome, Qt, SOL, BrainAid and the Java Proxy and Kroppyer's Converter. My browser cache was cleared. The firewalls on both Windows 10 and my Bitdefender security software. Port 5010 was cleared of any interference. All to no avail! In the process my computer was rebooted several times. I then looked for software updates. There was an updated version of Qt which I had not installed so I did that. I had not really wanted to install this so close to a race start. I then found that Java had updated their software on October 20th so I did that uninstall and install update. Low and behold a connection but I had no course from the Start to North Head so I was sailing SOMP's to North Head but hoping to create a course after I rounded North Head. Before I rounded I lost the connection again! After I rounded I manually set a course using the Log for one of the routes I had created the day before. Once settled on a tack of some length I shut everything down, rebooted my computer, opened Qt and renewed the BrainAid Proxy/Java link and was then able to create a routing to Cape Brett Light and upload the DC's using Kroppyer's Converter and BrainAid's DC Editor. Fortunately, you do not lose anything in Qt or SOL when you do this. I am sharing this because it is not the first time it has happened to me but in the past the connection mysteriously came back up on its own. Sometimes it required rebooting my computer. I have seen in both the Forum and in the Chatroom that others have had similar problems so I am hoping this will help should you have a similar situation. There is momentary panic when you do not know what to do to solve the problem!

During all of this I reached out to **Bimmer** who kindly advised that it was likely a BrainAid/Java problem and that I should consider moving from BrainAid to AutoGribLoader, which he and the other high-ranking SOLers use. So, I am exploring this and perhaps you should to. Here is a link from the Home Page Link to **Kipper1258's** Grib Helper Tool <http://www.sailonline.org/board/thread/16719/agl14-releases/?page=1#post-16732>

At some point in the past I was able to print out the AutoGribLoader Manual Version 2.5.7 but at this moment I cannot find my way back to where I found it so you will have to search the Forum for yourself.