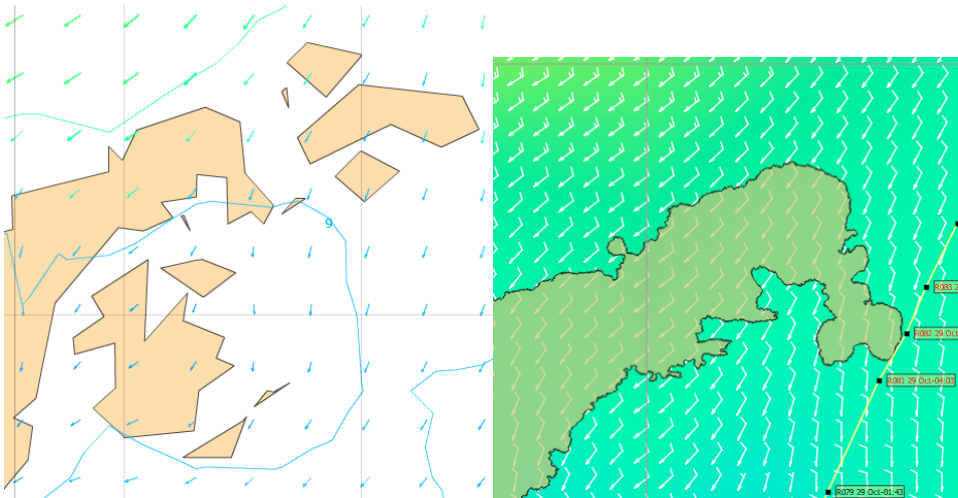


Differences between the maps on SOL and QtVlm in Antarctica.



If you make a route on QtVlm it will drive you over land on the SOL map.  
The solution is, in QtVlm to click on the lighthouse (top/left on the icon bar).  
This will give you a map that matches SOL.  
Then make a barrier as shown on the picture and make a new routing/route.  
This will take you outside land in SOL.

